



Creative Paperclay® Basics

[adding tools to your art arsenal]

by **Darlene Olivia McElroy** | darleneoliviamcelroy.com

A quick little FREE step by step tutorial on working with Creative Paperclay® and Creative Paperclay® slurry.





Creative Paperclay® Basics

[adding tools to your art arsenal]

Creative Paperclay® is a self hardening clay with great adhesive qualities. It is great for surface textures, cast objects, 3 dimensional objects and surface texture. It takes paint, stains, gold leaf and stamping well. It can be made into a slurry to thicken your paints and/or to smooth out your clay projects. You can cast molds or just shape with your hands. Once it has dried you can sand it with sandpaper, a Dremel or special tools like Sand-Its. At this time it is also ready to paint. Be aware that there is some shrinkage with the product.

Paper Clay Casting & Stamping

To get started you will need Creative Paperclay®, molds (silicone are the best), tools to shape and trim the clay and textures to stamp into the clay. While working you may want to smooth the clay. If so, wet your fingers and rub the edges of the clay.

Drying time varies based temperature and humidity for the time of year and also thickness of the clay. Once dry the clay takes paint and surface techniques well. Put unused clay into a sealable plastic bag to keep it moist for future use.



Stamps & texture plates are great for surface interest.



Stamped clay in found frame.



Finished off with paint & collaged objects.



1 Stamped clay over cardboard heart shape.



Rusted, gold rub, escutcheon & branches added.



Silicone or push molds are great for casting objects.



Each cast will look slightly different.



Painted cast objects glued to art with soft gel.

Tips

Before applying paint, I seal the dry clay with polymer medium. This keeps the paint from being absorbed into the surface. When the art is complete, I add a final coat of GAC 200. This contains a hardener that prevents chipping if it is being handled a lot.

Slurry

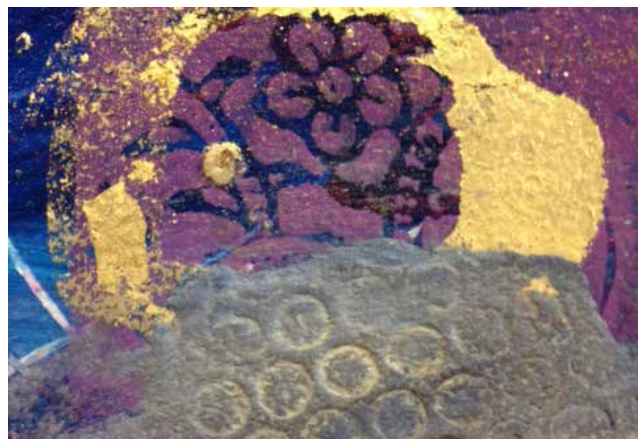
Slurry has a porridge consistency and is made from a mix of small pieces of clay and water. I keep this in a plastic storage container so I always have some available. This can be used to thicken your acrylic paints and add texture to your art. It can also be stamped into it, make raised stencils or backgrounds. Also, it is easy to tint with just a little bit of acrylic paint.



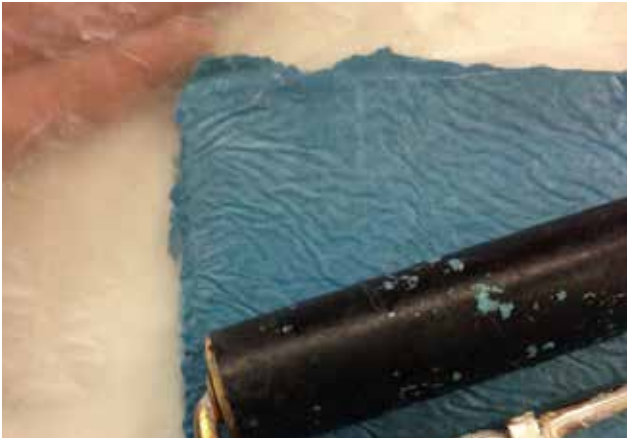
Apply acrylic paint to slurry and mix well.



Apply to surface & stamp with bubble wrap. Let dry.



Buff wash applied to dried stamped slurry.



Wax paper helps to brayer slurry flat.



When dry, remove wax paper & scribe into surface.

Surface Techniques

Creative Paperclay® accepts a variety of surface techniques well. You can add metal leaf or foil, encaustics (if left unsealed), image transfers, pastels, mica powders, metallic rubs and more.

Before applying color, I seal the dry clay with polymer medium. This keeps the paint from being absorbed into the surface. When the art is complete, I add a final coat of GAC 200. Again, this has a hardener in it that prevents chipping if it is being handled a lot.



Holographic gold foil applied to stained clay.



Gold & silver rub on painted, stamped clay.



Encaustic wax applied over clay hand & stained.



4 Oil pastels applied to painted, stamped clay.



Blender pen transfer applied to clay.

Darlene Olivia McElroy

Darlene is a working artist, educator and art book author who has a touch of mad scientist in her. She loves exploring art surfaces techniques and sharing them with other artists around the world.

She a storyteller by birth and could never resist the power of paint to give vision to the tales floating in her imagination and asking to be told. Her richly layered work is about time, personal myths and the links that join the individual to the continuum of past, present, and future.

Darlene's art work is represented in galleries in the U.S. and Mexico. When she is not in her studio in Santa Fe, NM, surrounded by three dogs, you will find her teaching classes and workshops and writing art technique books for Northlight.

To see Darlene's art or sign up for her monthly newsletter full of studio news, tips & techniques, visit her web site: darleneoliviamcelroy.com.



Bellisima, 12" x 36" mixed media on panel



Fly Bye, 12" x 36" mixed media on panel