



# Gampi Tips & Techniques Basics

[ adding tools to your art arsenal ]

by **Darlene Olivia McElroy** | [darleneoliviamcelroy.com](http://darleneoliviamcelroy.com)

A quick little FREE step by step tutorial on working with Gampi tissue.  
Expand your creativity by learning new tips and techniques.





# Gampi Tips & Techniques Basics

[ adding tools to your art arsenal ]

Gampi is a Japanese shrub, a member of the genus Wikstroemia, which have been used for making paper since the 8th century. Most Gampi now is a machine made tissue that has the characteristic sheen and soft translucence of Gampi but less expensive. It comes in tan and white sheets. I recommend the white as the tan affects the underlying color and shows an edge. The beauty of Gampi is that it disappears when applied to a surface and only the marks you made on it are left showing.

## Stamping

When stamping, one gets a sharper transfer if the gampi is laid on to a surface with “give”. I use a newsprint pad for this. Texture plates, stamps or heavily textured surfaces are all great to use for stamping.

If you find the paint dries too fast to get a good stamped image, add a little glazing medium or Golden’s open gel to the paint to extend the drying time.



Paint applied to stamp then stamped onto Gampi.



The Gampi tissue becomes transparent when applied.



Sample of stamped Gampi glued to surface.

## Drawing

You can draw with prisma pencils, crayons, pastels, graphite, etc. With most of these you will have to spray them with a workable fixative prior to gluing them down to an art surface. This will prevent smearing.



Charcoal drawing on Gampi



Glued to art after sprayed with a workable fixative.

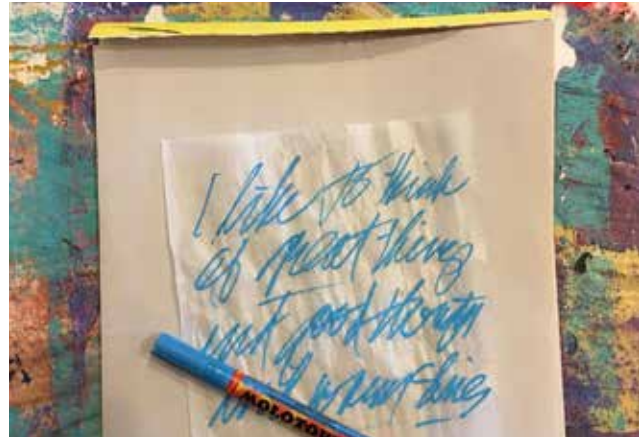


Crayon drawing on Gampi applied to art surface.

## Writing

I love working with paint pens to add a verbal story to my artwork. The Molotow brand is my favorite and comes in a variety of nib sizes. NOTE: Some paint pen brands will smear and it is necessary to spray with a workable fixative before applying to the art surface.

Why not write directly on the art surface? Because if I make a mistake or change my mind, I can correct it. It also allows me to figure out placement. Think of it as controlled spontaneity.



Paint pen marks on Gampi.



Glued to art after sprayed with a workable fixative.

## Watch My Gampi Video

<https://www.youtube.com/watch?v=ej90os-A8BK0>

## TIPS

Gampi can be applied to bisque ware ceramics.

Wrinkles in Gampi can be sanded off.

## Image Transfers

There are several kinds of image transfers that work great on the Gampi. Krylon's Chrystal Clear and Chartpak's colorless blender pen both require a toner/laser print (black and white or color) to work with. Note: This technique will not work with inkjet prints.

Using the blender pen, the image needs to be placed face down on the Gampi. Rub the blender over the small areas of the image and burnish immediately. Repeat until the whole image is transferred. You may have to go over areas multiple times to get a good transfer.



The image will transfer lighter.



Crystal Clear transfer.



Applied over background & collaged on top.

## Gelli Prints

Gampi can be used with Gelli plates. For more working time add glazing medium or Golden's open gel to your paint. Apply paint to Gelli plate and make marks in it. Make sure that there are areas with no paint so the underlying surface that you intend to apply it to will show through. Gently lay the Gampi on to the wet paint and pat down. Immediately pull off and let dry.



Create a design on a Gelli plate.



Lay the Gampi onto the paint, pat down & remove.



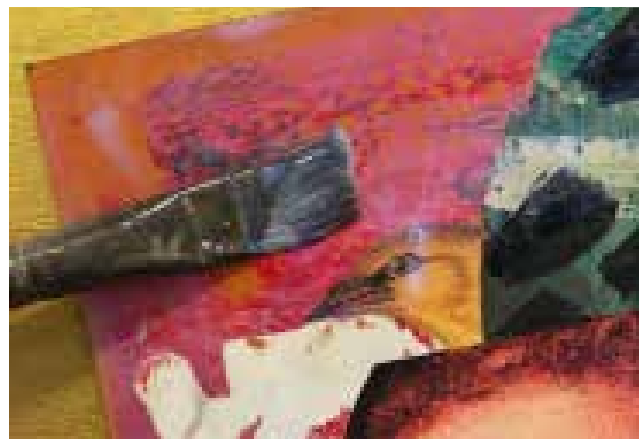
How it looks applied to painting.

## How to Apply to Art

Wet your surface lightly with water before applying polymer medium to the surface. This will make the Gampi more transparent. Carefully lay the Gampi on to the artwork and with a brush, brush out any wrinkles. Because the Gampi will be transparent when applied, you can apply with either side down on the art.

NOTE: This works best on light to medium backgrounds. Edge will show on dark backgrounds.

**3**



Polymer medium applied to a wet surface.

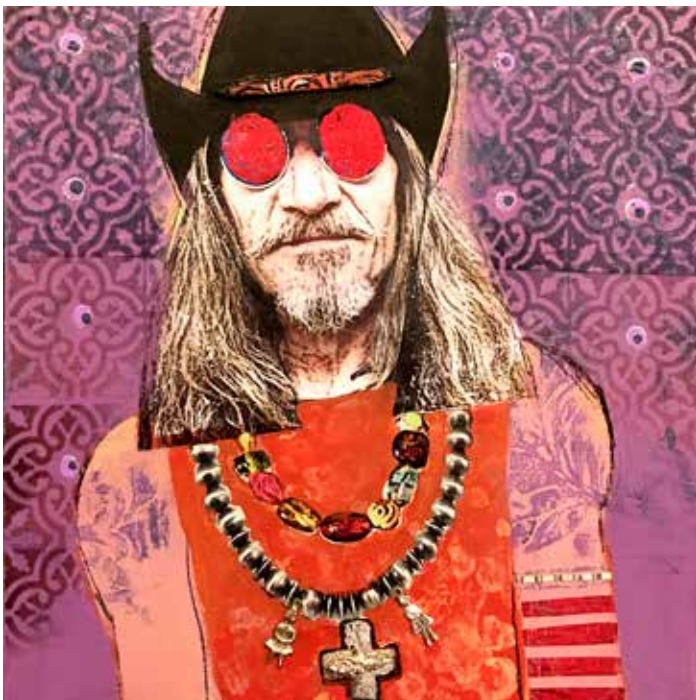
## Darlene Olivia McElroy

Darlene is a working artist, educator and art book author who has a touch of mad scientist in her. She loves exploring art surfaces techniques and sharing them with other artists around the world.

She a storyteller by birth and could never resist the power of paint to give vision to the tales floating in her imagination and asking to be told. Her richly layered work is about time, personal myths and the links that join the individual to the continuum of past, present, and future.

Darlene's art work is represented in galleries in the U.S. and Mexico. When she is not in her studio in Santa Fe, NM, surrounded by three dogs, you will find her teaching classes and workshops and writing art technique books for Northlight.

To see Darlene's art or sign up for her monthly newsletter full of studio news, tips & techniques, visit her web site: [darleneoliviamcelroy.com](http://darleneoliviamcelroy.com).



*Santa Fe Cowboy, 12" x 12" mixed media on panel*



*Snake Charmer, 12" x 12" mixed media on panel*